

EPS 10-100

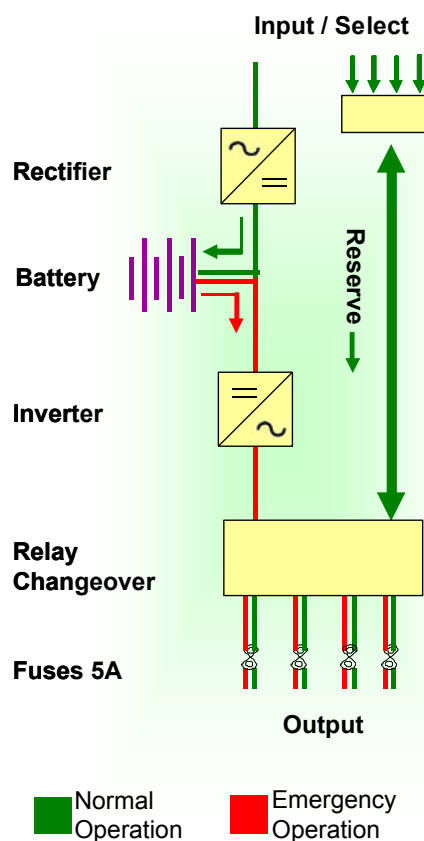


Features

- 4 x Selectable maintained / non-maintained outputs (fused)
- Passive standby with relay changeover as standard
- Deep discharge protection
- LED display
- 10 Year VRLA battery (internal)
- Dry contact alarm – common alarm
- Thyristor battery charger - recharge within 24hrs
- Microprocessor based FET inverter
- High IP ratings (option)
- Internal Power Factor Correction capacitors (option)

System Type	Watts Rating	VA Rating	Size	Weight
1 Hour Backup			(H/W/D mm)	(KG)
EPS10/1	120	150	400x600x210	24
EPS20/1	240	300	400x600x210	42
EPS30/1	360	450	400x600x210	55
EPS40/1	480	600	600x600x300	62
EPS50/1	600	750	600x800x300	78
EPS60/1	750	950	600x800x300	90
EPS80/1	960	1200	600x800x300	98
EPS100/1	1200	1500	800x800x300	128
3 Hour Backup				
EPS10/3	120	150	400x600x210	42
EPS20/3	240	300	600x800x300	78
EPS30/3	360	450	600x800x300	98
EPS40/3	480	600	800x800x300	128
EPS50/3	550	750	1100x800x400	170
EPS60/3	750	950	1100x800x400	215
EPS80/3	960	1200	1100x800x400	220
EPS100/3	1200	1500	1100x800x400	250

System Operation



Specifications

Input

- Nominal input voltage (+-10%): 230 / 240
- Nominal input frequency (+-5%): 50Hz

General

- Cubicle type: Wall/floor mount (IP23)
- Noise: <50dBA
- Temperature: 0-40°C
- Standards: EN50091-1 (Safety) / EN50091-2 (EMC) / EN61000-3-2 (Harmonics) / BS6290-4 (Batteries)

Output

- Nominal output voltage: 230 / 240V
- Static voltage regulation: +-2% true RMS
- Inverter waveshape: Sinewave
- Load power factor: 0.8
- Overtemperature protection: Ambient temperature monitoring